

PCBA Cleaning Machine ETA-5600

**Introduction:**

ETA-5600 is an off-line, compact, energy-saving and environmental protection, batch cleaning, high-end PCBA cleaning machine. ETA-5600 can automatically complete the cleaning, rinsing, drying process in the clean chamber by just push one start key.

ETA-5600 PCBA cleaning machine can effectively clean the residuals on SMT / THT welding PCBA, such as: rosin flux, water-soluble flux, non-clean flux, solder paste and other organic and inorganic contaminations.

Mainly used in aviation, aerospace, medical, new energy, automotive electronics, meters industries, especially suitable for small amount, multiple types PCBA cleaning.

Features:

1. Through clean rosin flux, water-soluble flux, non-clean flux, solder paste and other organic and inorganic contaminations.
2. 2-layers cleaning basket: 610mm(L) × 560mm(W) × 100mm(H) × 2 layers.
3. State of the process is visible through a large observation window.
4. Clean detergent heat system heat cleaning detergent to a certain temp, raise cleaning efficiency and reduce clean time.
5. Easy operation interface, quick setting clean parameters. Different passwords can be set.
6. Inner filter makes detergent used repeated. Real-time measure DI water resistivity and monitoring cleaning effect. Resistivity range is 0~18 MΩ.
7. The remaining detergent in the pump and pipes are blown off by compressed air and flow back to cleaning tank. This function saves detergent up to 50%.
8. High standard cleanliness, ionic contamination completely meets the requirement of IIPC-610D I class.
9. Totally SUS304 structure, very firm and attractive.

Material:

Visible, lighting

Large space: 640*560*520mm, 2 layers
Cleaning room (Stainless steel 304)

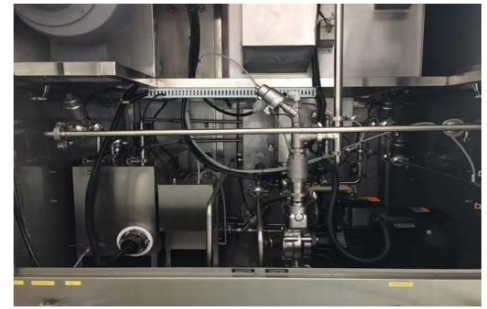
Auto move



Control Box
Mitsubishi,Schneider,CKD,Omron

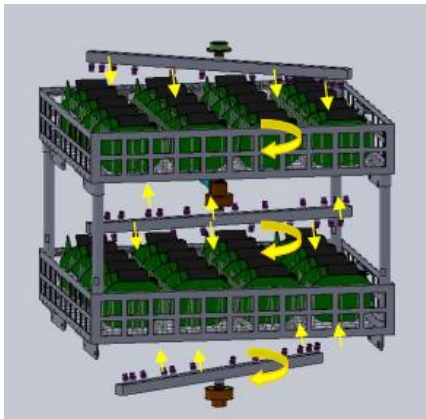


Industrial Pure Water Machine
Made by ETA

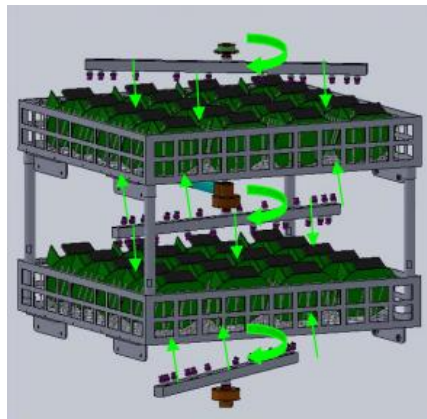


Pipe and Valve
Stainless steel304

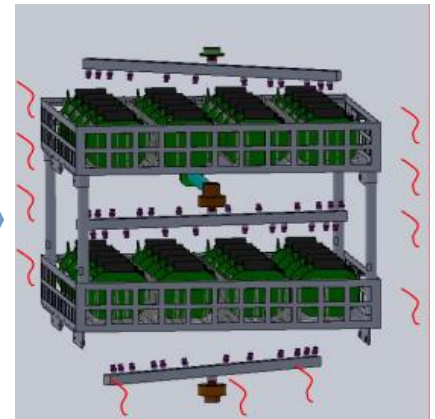
Cleaning process:



Cleaning

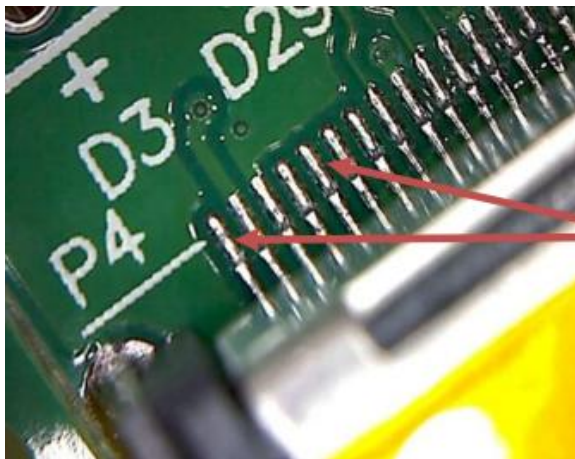


Rinsing

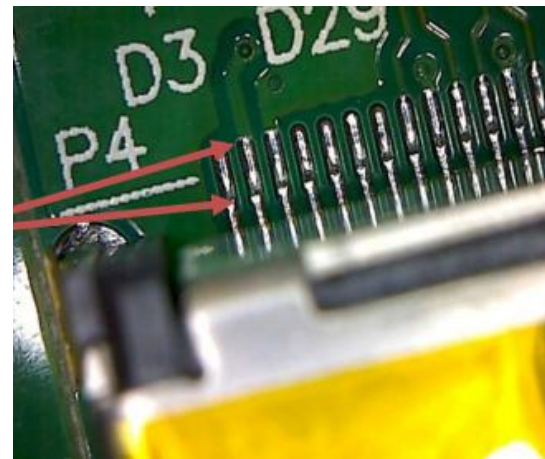


Drying

Effect:



Before cleaning



After cleaning

Specification:

Item	ETA-5600
Cleaning basket size	L610 x W560 x H100 (mm) x2 layers
Spray tank capacity	17L
Concentrate capacity	32L
Dilution capacity	60L

Clean time	5~20min
Rinse time	1~2min/times
Rinse times	1~99times
Hot air dry time	10~30min
Detergent heat temp	Room temp~60°C
PCB hot air dry temp	Room temp~99°C
Resistivity range	0~18MΩ
Detergent filter	0.22um
Rinse water pipe out filter	0.22um
Air filter	10um
DI water supply	30~65L/Min
DI water pressure	0.2~0.4Mpa
Vent size	Φ76xH50(mm)
Power/Air supply	AC380V/50A/50HZ,30KW,0.5Mpa
Machine size	L1300 x W1200 x H1850(mm)
Machine weight	460KG

Thanks for choosing ETA.
ETA looks forward to win-win cooperation.
Thank you.